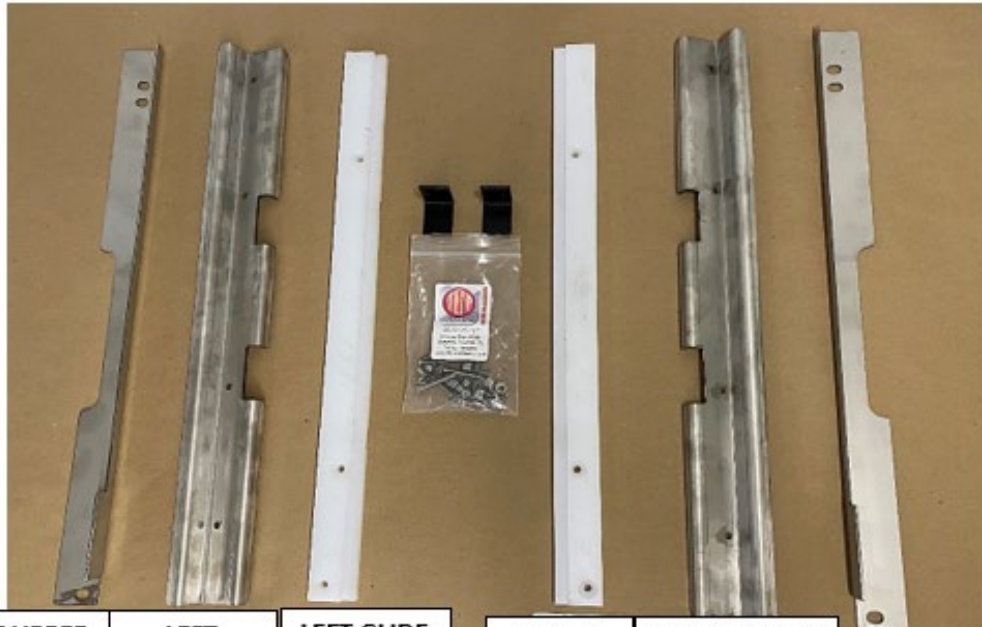
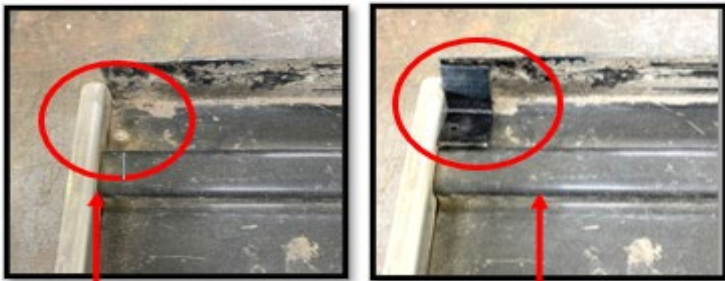


WHAT'S IN THE KIT



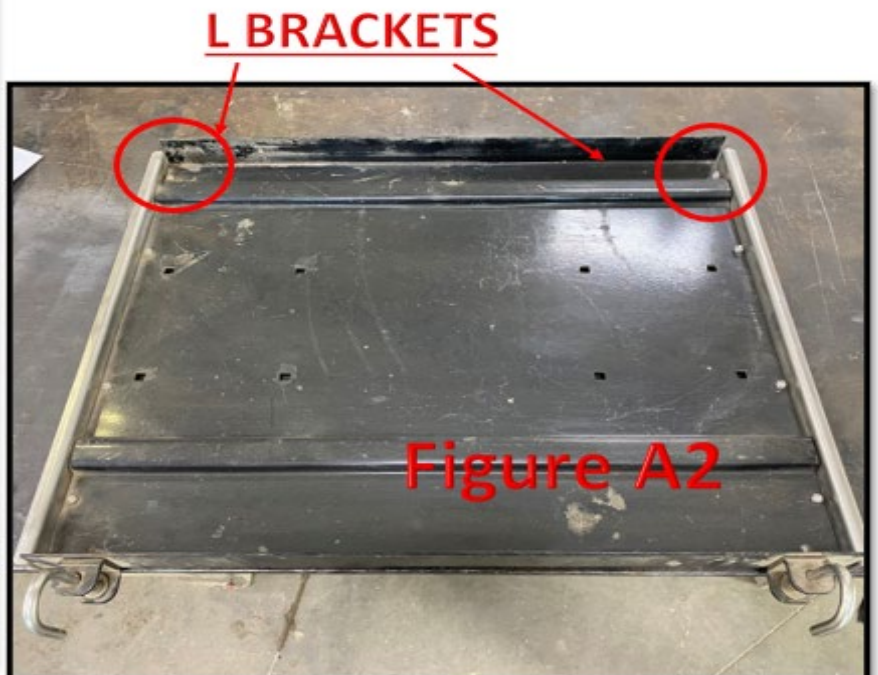
LEFT UPPER GLIDE RAIL	LEFT LOWER GLIDE RAIL	LEFT GLIDE MOUNT	RIGHT GLIDE MOUNT	RIGHT LOWER GLIDE RAIL	RIGHT UPPER GLIDE RAIL
-----------------------	-----------------------	------------------	-------------------	------------------------	------------------------



Step 1 NOTE



Figure A1



L BRACKETS

Figure A2

LEFT

RIGHT

Figure B

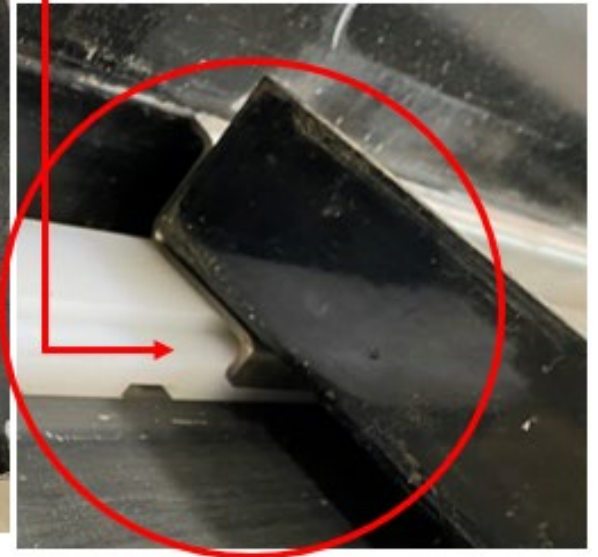
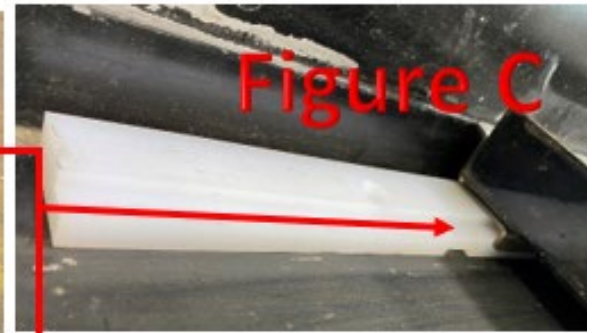


Figure D





TGT Battery Tray Glide System FOR THOMAS SAF-T-LINER

INSTALLATION INSTRUCTIONS

CUSTOM WORKS, LLC

PART # 06-37275-TGT

BEFORE YOU BEGIN INSTALLATION PROCESS

- Remove batteries, dismantle and remove tray,
- Remove and discard factory slide rails,
- Clean up battery tray and box, removing dirt, rust, and debris

Step 1. With battery tray removed, install Left and Right Lower Glide Rails using included tapered screws and nuts so that screws face upward and nuts are on top of tray. Set battery tray aside. See *Figure A* for *Glide Rail positioning*

Step 1 NOTE: If your box tray does not have the back vertical lip that will act as a stop, install two included L Brackets at the back of the battery tray by removing the existing bolts in the two back corners of the battery tray, aligning the bracket's pre-drilled holes where the bolts were removed, and re-installing the bolts to secure L Brackets to the battery tray.

Step 2. With battery tray set aside, position white Glide Mounts to the outer left and right sides of empty battery box with the taller sections of the Glide Mounts that contain holes, running along the outer most edge of the battery box and the tapered, lower portion of the Glide Mounts facing inward. Position so that the two notches on the bottom side of the Glide Mounts straddle the existing rivets on battery box, allowing them to lay flat on the bottom of the battery box. Do not yet use hardware to secure in place. See *Figure B* for *Glide Mount positioning*

Step 3. Retrieve battery tray and place on top of white Glide Mounts in battery box. Slide tray as far back into the battery box as possible. **IMPORTANT:** Ensure that the Lower Glide Rails sit on top of the Glide Mounts with the lower lip of the Lower Glide Rail tight to the inner most edge of the white Glide Mounts. If this part of installation is overlooked, it could result in battery tray sliding while bus is in motion. See *Figure C* for *battery tray positioning*

Step 4. Once positioning of tray has been determined to be correct on top of Glide Mounts, remove battery tray, leaving Glide Mounts in position. Mark the location of the 3 pre-drilled holes on the Glide Mounts on each side. Loosely secure Left and Right Glide Mounts by drilling provided screws through the holes on the Glide Mounts and into the bottom of the battery box, ensuring Glide Mount holes stay aligned with the marks made previously in this step. DO NOT yet tighten screws.

Step 5. Place battery tray back on top of Glide Mounts in battery box and confirm placement is such that the Glide Mounts run parallel to one another on each side of battery box and that battery tray can slide smoothly back and forth on top of glide mounts. Once placement is confirmed to be satisfactory, finish tightening screws. Nuts will sit on the bottom side of the battery box.

Step 6. Remove the two bolts on each side of the plastic battery cover that hold it in place. Reinstall battery tray and position it so it sits pushed all the way to the back of the battery box. Position the Left and Right Upper Glide Rails so that the lip with the 3 pre-drilled holes sits vertically behind the plastic cover as shown in *Figure D*. The protrusion highlighted in *Figure D* must sit at the front of the battery box, as this will act as the battery tray stop.